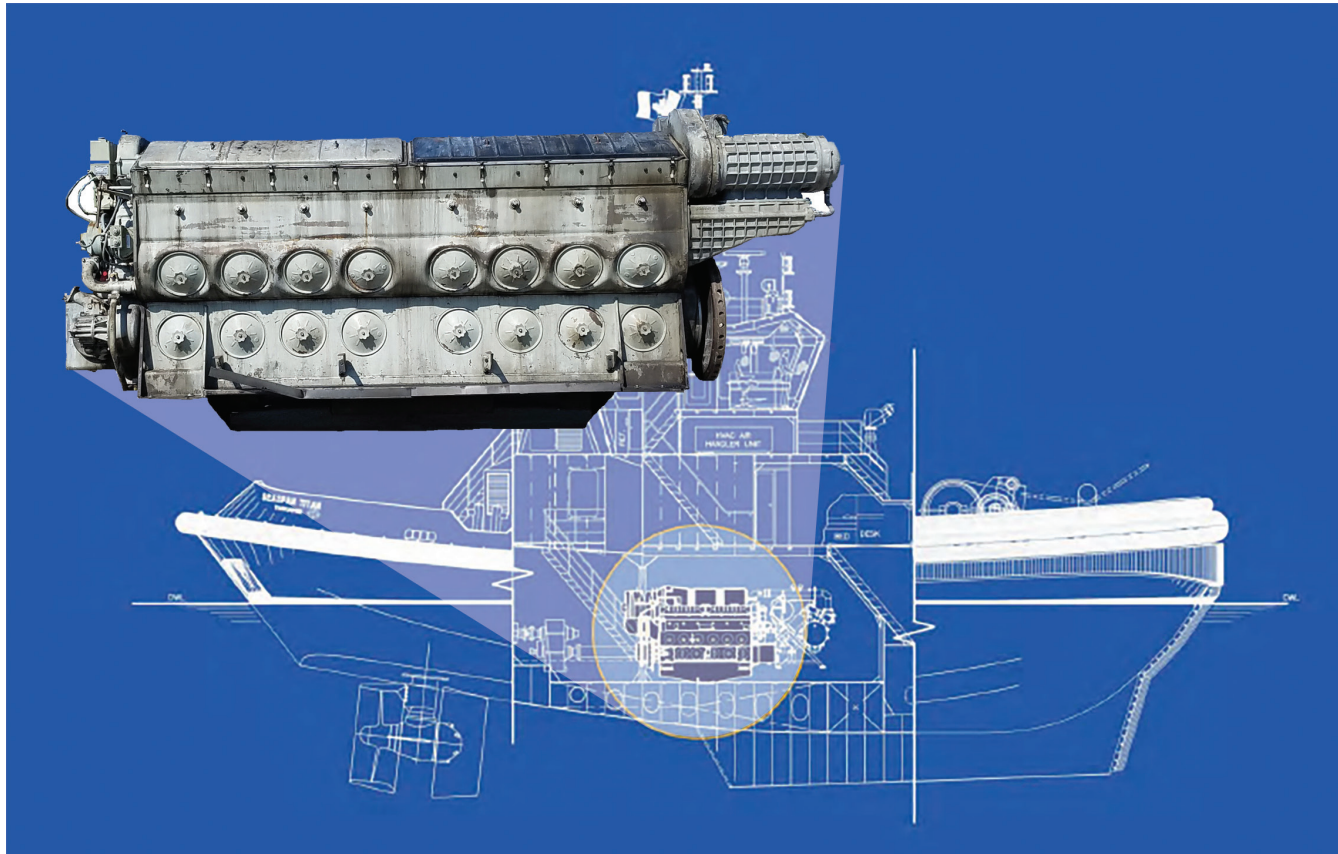


Segmented Starter Gear

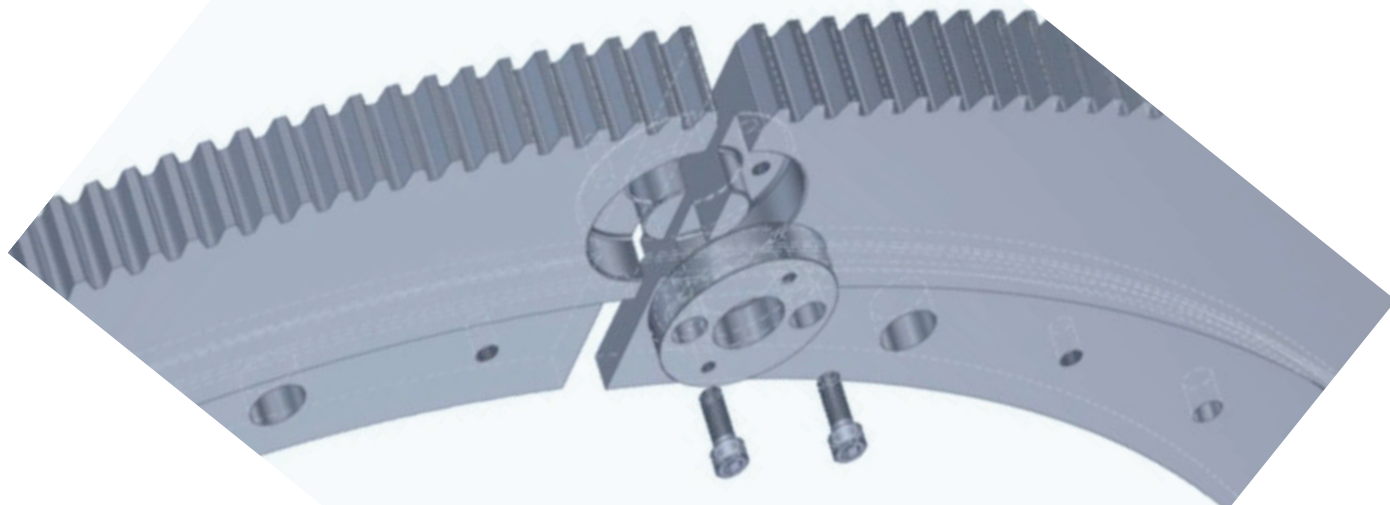


Penn Machine segmented starter gears are ideal for 645 & 710 engines used in workboats.

For over 20 years, Penn Machine has manufactured and delivered over 3,000 Segmented Starter Gears into the market through OEM and aftermarket repair channels. These Penn Machine original design starter gears have exceeded the intended life expectancy without a single warranty issue since we first introduced this revolutionary design.

Key features & benefits of our starter gears include:

- **3-Piece Design**
- **Significant Removal & Installation Change-Out Time**
- **Reduced Downtime = Increased Profitability**
- **PMC Original Segmented Design**
- **In-House Heat Treated Alloy Steel**
- **OEM Supplier**
- **Straight or with 45 Degree Tooth Chamfer**



Segmented Starter Gear: A Close-Up View

# of Teeth	OEM Part Number	Penn Machine Part Number
265	40121149 40051536-S 8416930-S	00493643 (3-Piece)
265	40051536 8416930	00576549 (solid)
265 w/Chamfer	40122615	00708066 (3-Piece)
265 w/Chamfer	40114007	00708065 (solid)
280	40119488	00708004 (solid)

**For more information,
or to place your
order, contact:**

Richard Martin
Sales Manager
724-541-7279
rmartin@pennmach.com

Eric Cramer
Sales Engineer
814-242-0646
ecramer@pennmach.com

About Penn Machine

In 1920, Penn Machine Company began as Penn Smokeless Coal (PSC). PSC pioneered manufacturing better replacement equipment parts with an emphasis on QUALITY for coal mining equipment. Over the years, Penn Machine has grown to become one of the premier suppliers of heavy-duty OEM and aftermarket components for the transit, railroad, mining, steel, and industrial markets. Our business is both domestic and international in scope. With continuous focus on improving our quality products through 80/20 principles, Penn Machine is well positioned to meet the needs of rail, marine and heavy industry throughout the 21st Century. Our capabilities and experience combine to provide a wide range of quality manufactured products and services. Penn Machine is comprised of four market-focused stand-alone business units: Transit, Locomotive, Marine and Industrial/Mining.



American
Gear Manufacturers
Association

AAR M1003



©2016 Penn Machine Company LLC



PENN MACHINE COMPANY

106 Station Street • Johnstown, PA 15905
Tel: 814.288.1547 • Fax: 814-288-2260



MADE IN USA



A Marmon/Berkshire Hathaway Company

www.pennlocomotivegear.com