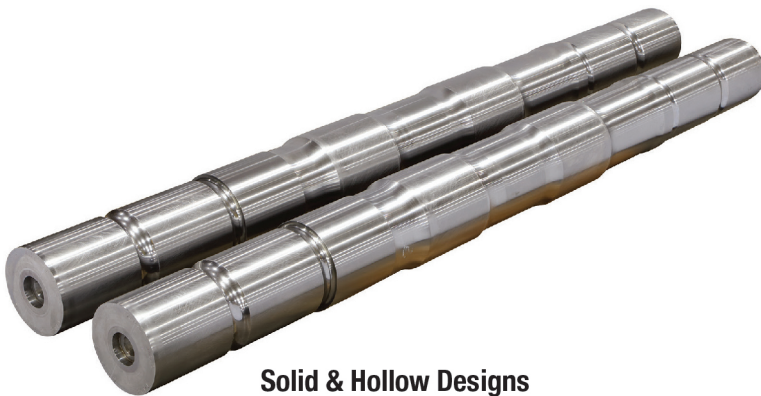
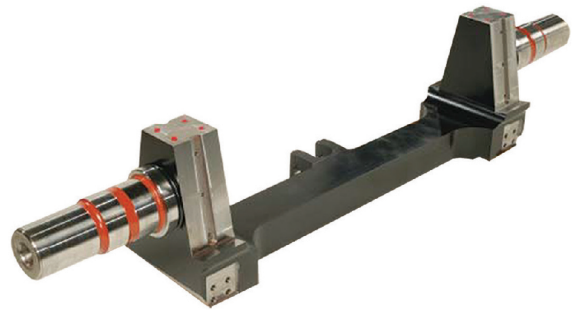


## Superior Axles

At Penn Machine, we offer a wide selection of axles in solid and hollow designs. We also manufacture inboard and outboard designs, and subcritically quench axles vertically, if required. Regardless of your specific requirements, Penn Machine has the knowledge and skills to meet them.



**Solid & Hollow Designs**



**Low Floor Designs**

**Terms & Conditions:** Equipment available only to end users.

## A Leader in Wheels & Maintenance Equipment for Transit, Rail & Mining/Industrial Applications

In 1920, Penn Machine Company (PMC) began as a coal company and pioneered the manufacture of quality replacement parts for coal mining equipment. Over the years, the company has grown to become a major supplier of heavy-duty OEM and aftermarket components for transit, railroad, mining, steel, construction, and general industrial applications. Our business is domestic and international in scope. Our capabilities and experience combine to provide a wide range of quality manufactured products and services. Penn Machine is comprised of three market-focused stand-alone business units: Transit, Locomotive, and Industrial/Mining, with operations in Johnstown and Blairsville, PA. Penn Machine Company is part of Marmon Holdings, Inc., a global organization of manufacturers owned by Berkshire Hathaway Inc.



American Gear Manufacturers Association



**PENN MACHINE COMPANY LLC**

Headquarters

310 Innovation Drive  
Johnstown, PA 15905

106 Station Street  
Blairsville, PA 15717



A Marmon | Berkshire Hathaway Company